

# 04

OPERABILITY  
CONNECTIVITY  
ACCESSORIES

## EOS 5D Mark IV

SPECIFICATIONS

EOS  
DIGITAL

Canon  
Delighting You Always

TAKE ON  
THE INFINITE

Made in  
JAPAN



EOS 5D  
Mark IV

Image Sensor Type	CMOS sensor	Shutter speed	1/8000 sec. to 30 sec. (total shutter speed range; available range varies by shooting mode). Bulb, X-sync at 1/200 sec.
Aspect ratio	3:2	Continuous shooting speed	High-speed continuous shooting: Max. approx. 7.0 shots/sec. Low-speed continuous shooting: Max. approx. 3.0 shots/sec. Silent continuous shooting: Max. approx. 3.0 shots/sec.
Image sensor size	Approx. 36.0 x 24.0 mm	Max. burst	JPEG Large/Fine: Approx. 110 shots (Card Full) RAW: Approx. 17 shots (Approx. 21 shots) RAW+JPEG Large/Fine: Approx. 13 shots (Approx. 16 shots)
Effective pixels	Approx. 30.4 megapixels	External Speedlite	Compatible with EX-series Speedlites
Image type	JPEG, RAW (14-bit Canon original), RAW+JPEG simultaneous recording possible	Flash metering	E-TTL II autofocus
Pixels recorded	L (Large): Approx. 30.1 megapixels (6720 x 4480) L-RAW: Approx. 30.1 megapixels (6720 x 4480)	Flash exposure compensation	±3 stops in 1/3- or 1/2-stop increments
Picture Style	Auto, Standard, Portrait, Landscape, Fine Detail, Neutral, Faithful, Monochrome, User Defined 1 - 3	Recording format	MOV, MP4
Viewfinder Type	Eye-level pentaprism	Movie	4K: Motion JPEG Full HD/HD: MPEG-4 AVC/H.264 variable (average) bit rate
Coverage	Vertical/Horizontal approx. 100%	Audio	MOV: Linear PCM, MP4: AAC
LCD Monitor Type	TFT colour, liquid-crystal monitor	Movie recording size	4K (4096x2160), Full HD (1920x1080), HD (1280x720: High Frame Rate movie)
Monitor size and dots	Wide 8.1 cm (3.2-in) (3:2) with approx. 1.62 million dots	Frame rate	NTSC (119.9p/59.94p/29.97p/24.00p/23.98p) PAL (100.0p/50.00p/25.00p/24.00p)
AF points	Max. 61 points (Cross-type AF point: Max. 41 points)	Live View Shooting/ Movie Shooting/ Focus method	Dual Pixel CMOS AF
Focusing brightness range (via Viewfinder)	EV -3 - 18 (Conditions: f/2.8-sensitive centre AF point, One-Shot AF, room temperature, ISO 100)	Dimensions (wtxhxd)	Approx. 150.7 x 116.4 x 75.9 mm / 5.93 x 4.58 x 2.99 in.
Focus operation	One-Shot AF, AI Servo AF, AI Focus AF, Manual focusing (MF)	Weight	Approx. 890 g / 31.39 oz. (Including battery, CF card, SD memory card), Approx. 800 g / 28.22 oz. (Body only)
AF fine adjustment	AF Microadjustment	<b>DISCLAIMERS</b> *All the data above is based on Canon's testing standards and CIPA (Camera & Imaging Products Association) testing standards and guidelines. †Dimensions and weight listed above are based on CIPA Guidelines (except weight for camera body only). Product specifications and the exterior are subject to change without notice. † If a problem occurs with a non-Canon lens attached to the camera, consult the respective lens manufacturer.	
Metering mode	Approx. 150,000-pixel RGB+IR metering sensor and 252-zone TTL open-aperture metering EOS ISA (Intelligent Subject Analysis) system		
ISO speed (Recommended exposure index)	Scene Intelligent Auto: ISO 100 - ISO 12800 set automatically P, Tv, Av, M, B: ISO Auto, ISO 100 - ISO 32000 manual setting (in 1/3- or whole-stop increments), and expansion to L (equivalent to ISO 50), H1 (equivalent to ISO 51200), H2 (equivalent to ISO 102400) provided.		
Exposure compensation	Manual: ±5 stops in 1/3- or 1/2-stop increments AEB: ±3 stops in 1/3- or 1/2-stop increments (can be combined with manual exposure compensation)		
Flicker reduction	Possible		
HDR Shooting - Dynamic range adjustment	Auto, ±1, ±2, ±3		
Multiple Exposures	Number	2 to 9 exposures	
	Control	Additive, Average, Bright, Dark	



### DUST/WATER RESISTANCE

The EOS 5D Mark IV exterior's joint areas are sealed by outer rubber coating and dust/water resistant material.



### MAGNESIUM ALLOY EXTERIOR

Weighing only 810g, the EOS 5D Mark IV's magnesium alloy exterior ensures the camera remains lightweight yet durable, making it especially suitable for use in harsh environments.

### OPTIONAL BG-E20 BATTERY GRIP

Featuring a new slimmed down grip, the BG-E20 provides improved handing ease and comfort when shooting in portrait mode. Powered by two batteries, it extends battery life, lending extra support for long periods of movie or stills shooting.

### EF24-105mm f/4L IS II USM

Covering from wide angle to mid-telephoto, this versatile lens features improved optical and IS performance, durability, with Air Sphere coating for flare and ghosting suppression. With low-speed USM and noise reduction for improved movie compatibility performance, the lens works with Dual Pixel CMOS AF to provide users a silent, smooth movie shooting experience.



LATITUDE  
N 14° 51' 57"  
LONGITUDE  
E 101° 33' 41"  
ELEVATION  
290m

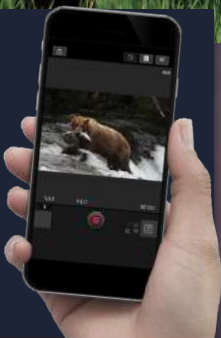


### BUILT-IN GPS

The built-in GPS acquires shooting location data, allowing users to easily categorise their images based on GPS information even when the power is off.

### BUILT-IN WI-FI/NFC

The built-in NFC and Wi-Fi capabilities supports the IEEE 802.11b/g/n (2.4GHz) standard, allowing users to seamlessly connect and transfer images and videos via the Camera Connect app.



CANON IMAGING ASIA

CANON ASIA

@CANONASIA

SNAPSHOT  
SNAPSHOT.CANON-ASIA.COM

#### SOUTH AND SOUTHEAST ASIA REGIONAL HEADQUARTERS:

CANON SINGAPORE PTE. LTD.  
1 Fusionopolis Place  
#15-10 Galaxis Singapore 138522  
[www.canon-asia.com](http://www.canon-asia.com)

Insist on an original warranty by your sales office.  
Specifications are subject to change without notice.  
Images are simulated.

0203W929

4K  
30p

Dual Pixel  
CMOS AF

Dual Pixel  
RAW

4K  
Frame Grab

30.4  
MEGA  
PIXELS  
CMOS

Up to  
61  
High Density  
Reticular AF

ISO  
32000

Up to  
7.0  
Frames  
Per Sec

Wi-Fi / NFC

GPS

# 01

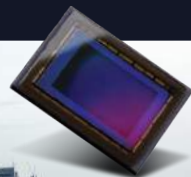
## CORE TECHNOLOGIES



**30.4** MEGA PIXELS  
CMOS

### 30.4 MEGAPIXEL CMOS SENSOR

The EOS 5D Mark IV maintains the series legacy of superior image quality with its 30.4 megapixel full-frame CMOS Sensor, as well as standard high ISO speeds up to ISO 32,000 expandable to ISO 102,400, allowing users to capture images of exceptional resolution under any lighting condition.



### DIGIC 6+ IMAGE PROCESSOR

The DIGIC 6+ Image Processor endows the camera with enhanced noise reduction, while its processing capabilities enables features such as the in-camera Digital Lens Optimizer (DLO) and high-resolution DCI 4K/30P movie shooting.

### LCD TOUCHSCREEN



With approximately 1.62 million dots, the Touch-Panel LCD Screen ensures an instinctive shooting experience through easy access to menu screen settings and Live View AF functions, and can be used to activate Dual Pixel CMOS AF for seamless focus switching during Full HD or 4K video recording.



# 02

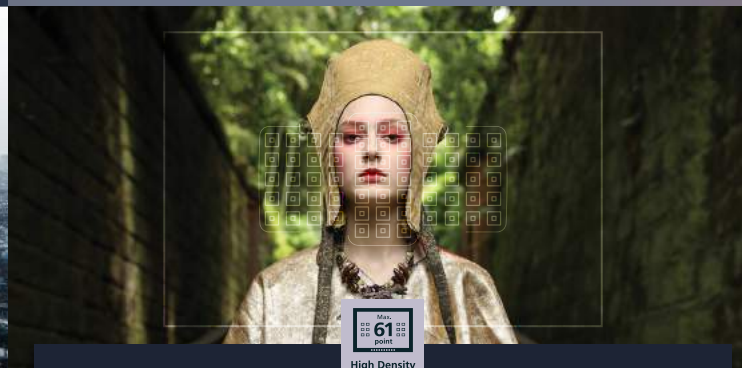
## STILL PHOTOGRAPHY



### 7FPS CONTINUOUS SHOOTING SPEED



The EOS 5D Mark IV is able to achieve a continuous shooting speed of 7fps due to a new mirror vibration control system that suppresses mirror motion impact while enhancing mirror driving speed, resulting in blur-free, razor sharp photos even from rapidly moving subjects.



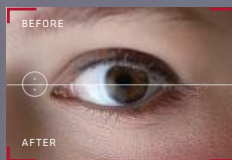
### 61-POINT AF SYSTEM

The 61-point AF System comes with 41 cross-type points and a low-intensity limit of EV-4 in Live View mode, ensuring precision-sharp AF and AF tracking. All 61 AF points are f/8 compatible, allowing great flexibility when pairing the camera with super telephoto lenses and extenders.



### DUAL PIXEL RAW (DPRAW)

#### IMAGE MICROADJUSTMENT



#### BOKEH SHIFT



DPRAW enables users to make micro adjustments to the position of maximum sharpness and resolution based on the depth of subject, reposition the viewpoint to horizontally shift the foreground bokeh, as well as reduce ghosting and flare effects via Digital Photo Professional (DPP) after a photo is taken.

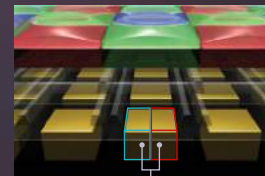
# 03

## MOVIE MAKING



### DUAL PIXEL CMOS AF

Dual Pixel CMOS AF technology is designed to provide fast, high performance autofocus and tracking during Live View stills and video shooting. It also allows seamless focus switching between subjects with just a single touch.



Each effective pixel is comprised of two photodiodes.



### 4K/30P MOVIE SHOOTING

The EOS 5D Mark IV is capable of capturing DCI 4K videos of ultra-high resolutions suitable even for commercial use. Users can choose between the MOV file format for cinematic production and the MP4 file format for other uses, giving moviemakers extra options in their moviemaking.

### IN-CAMERA 4K FRAME GRAB

The in-camera 4K Frame Grab function allows users to extract desired frames from 4K videos and save it as a high-resolution JPEG image of approximately 8.8 megapixels, all without the need for additional software or devices.

