

imagePRESS
C850 C750 C650

Canon
Delighting You Always

THE FUTURE



NEW LEVELS OF QUALITY AND
PRODUCTION IN COLOUR PRODUCTION

**BRING
IT ON**

Business Can Be Simple

THE PERFECT CHOICE FOR

The imagePRESS C850/C750/C650C has been designed to meet all the challenges of the colour production market. Ideal for busy CRD and GA environments, the imagePRESS C850/C750/C650C combines exceptional image quality with powerful productivity and offers the versatility to create extensive and innovative applications across a wide range of media, including heavyweight coated stocks and envelopes.

It can flexibly handle everything from short runs to complex variable data printing for personalised print communications – all within a small but scalable footprint. And with extended finishing capabilities and fast turnarounds it's the perfect choice to help you meet every print challenge. Plus it offers an excellent return on investment – bringing time and cost savings to demanding CRDs and revenue generating opportunities to Graphic Arts environments.



PRODUCT AT-A-GLANCE

PRODUCTIVITY

- Production speeds of up to 85 ppm (color and B/W)
- Maintains rated speed on uncoated stocks up to 220 gsm
- 7,650-sheet feeding capacity with up to six different sources
- Wide array of in-line feeding and finishing accessories

PRINT QUALITY

- Vibrant and consistent image quality on a wide variety of media
- 2400 x 2400 dpi print resolution
- Precise, front-to-back registration
- Gloss optimization
- Variety of calibration options to help maximize color consistency

CHOICE OF WORKFLOWS

- PRISMAsync Color Print Server
- imagePRESS Server H300
- imagePRESS Server G200
- imagePRESS Printer Kit

ENVIRONMENT

- Meets ENERGY STAR® standards
- Rated EPEAT Gold
- Compliant with RoHS
- Recyclable toner bottles
- No VOCs in consumables

EVERY PRINT ENVIRONMENT

IN-PLANT/CRD

The imagePRESS C850/C750/C650 digital color production presses deliver the productivity, ease of use, and versatility your operation requires. These presses let you do more with fewer operators. Optional PRISMA software solutions and PRISMAsync provide simple, intuitive operation.

Jobs are rapidly processed and can be finished in-line with minimal operator intervention. To enhance productivity, customers can submit work to the CRD via a wide variety of available software solutions, including Canon's enterprise-wide print management leveraging uniFLOW and PRISMAdirect.

QUICK PRINT/PRINT-FOR-PAY

Finally, there's a solution that meets the needs of the quick print market, thanks to its high quality, reliability, and versatility, delivering powerful opportunities in a small footprint. Intuitive, easy-to-use user interfaces help streamline prepress and production tasks.

Customers can expand their capabilities to handle a range of media, including long sheets up to 762mm and envelopes in different sizes and weights. In-line finishing options facilitate the output of ring-bound presentations, trifold flyers such as sell sheets, and multipage, full-bleed brochures.

COMMERCIAL PRINT

With quality that rivals offset, these digital presses offer many advantages:

- Gloss Optimization;
- Consistent color, thanks to the stable engine platform with CV toner;
- Multi D.A.T., real-time color correction and calibration features, including G7® calibration on the PRISMAsync controller; and,
- Excellent, front-to-back registration.

The imagePRESS C850 Series is ideal for short runs and variable data printing. It's also a cost-effective backup to your other devices.

These presses support outstanding efficiency, with the ability to integrate seamlessly with existing workflow solutions. And with multiple in-line folding and binding options and the ability to output envelopes, you'll be able to realize new business opportunities.



PRODUCT FEATURES

A SMALL FOOTPRINT

Enjoy quality results with new imaging technologies, outstanding versatility, and powerful performance—all in a small footprint. An ideal fit for a business ready for growth.

MANY MEDIA CHOICES

Please customers with the ability to print on attention-getting stocks and envelopes in a range of sizes. Expand new applications with duplex long sheet printing of up to 30 inches.

PRODUCTIVITY

Produce a broad range of print products, including three-fold brochures, saddle-stitched and square-folded brochures, postcards, business cards, presentation and training materials, flyers, and perfect bound books.

PRINT QUALITY

As with offset printing, images closely match the gloss levels of the paper stock



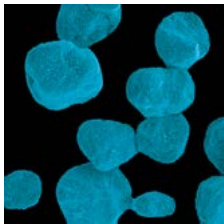
HIGH QUALITY FOR ALL PRINTS

CONSISTENTLY VIVID (CV) TONER FOR COLOUR CONSISTENCY

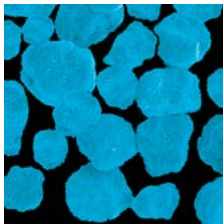
CV toner is Canon's newly developed toner, which delivers higher quality print combined with high speeds of up to 85 ppm. The new para-shell structure, ultra-fine toner particles and the toner's smooth surface, it's improved toner transfer efficiency for enhanced colour consistency and accuracy across a wide variety of media, including embossed and rough paper surfaces for custom and premium applications.

The efficient toner transfer reduces toner wastage, energy consumption and paper deformation. CV toner features a broad colour spectrum for rich and vivid colours that will produce high quality marketing materials and the right colour on all your corporate documents. It has a gloss optimisation technology allowing a high gloss finish on coated media and a matt finish on plain/low gloss media.

The enhanced developer unit is designed to cool the internal temperature and maintain high quality image in heavy duty environments. All these new features mean delighted customers willing to grow their business together with yours.



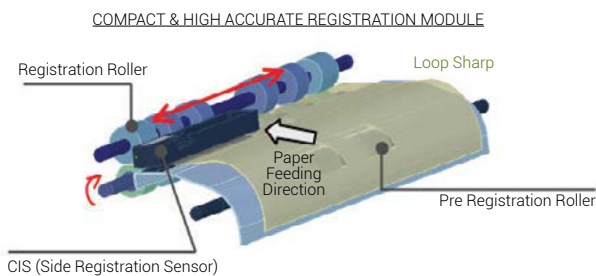
V Toner



New CV Toner

COMPACT REGISTRATION TECHNOLOGY (CRT)

Compact and highly accurate registration technology assures best-in-class results whether printing 1 sheet or thousands. The CRT combines digital sensors together with registration rollers to ensure that every single sheet is correctly positioned during print runs and that the image is placed in the same location on every sheet, for the highest quality results every time. This new technology also provides full control of the registration process, allowing you to satisfy the needs of even your most demanding customers.

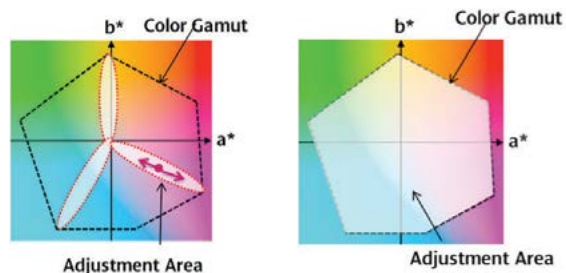


Skew and side registration correction mechanism

ENHANCED COLOUR CALIBRATION

Auto Correct Color Tone (ACCT) is the technology to get mixed colour back to initial condition based on values that are registered in the first ACCT at installation executed by service technician. For the first time in a Canon light production device, multidimensional mixed colour calibration (rather than CMYK single colour calibration). As the previous Auto Gradation Adjustment (AGA) focuses correcting single colours.

Auto Correct Color Tone can cover other colours that are not corrected by Auto Gradation Adjustment. A Special chart to be measured by reader is prepared for ACCT. This allows to make colour adjustment with a wider colour gamut that printer can reproduce.



Auto Gradation Adjustment (AGA)

Auto Correct Color Tone (ACCT)

VIBRANT IMAGES

The imagePRESS C850 series feature a 32 beam Vertical Cavity Surface Emitting (VCSEL) laser unit with multi-exposure technology that achieves an exceptional 2,400 x 2,400 dpi resolution – enabling even higher precision in the printing of text and images, while supporting high productivity. Image distortion compensation improves digital scale up and down so operators can easily adjust and correct images, including fan correction.

This new technology also allows operators to choose from a selection of the most versatile screen patterns available. They can select either new dot-screen patterns for optimised quality closer to offset or line-based patterns for even a larger choice.

These screen patterns can optimise the quality of any print application and, as a result, deliver the most stunning images that your customers will love and pay a premium for high-value applications.

BETTER HANDLING OF TEXTURE MEDIAS



Other brand printer



imagePress C850/C750/C650

MAXIMUM PRODUCTIVITY

IMPRESSIVE PRODUCTION SPEEDS

The Advanced Twin Belt Fusing unit is high production speeds of up to 85 ppm are possible on a wide range of media. The imagePRESS C850/C750/C650 is capable of running at maximum speed on heavy stock up to 220gsm and on uncoated stocks it offers exceptional production speeds. It achieves this outstanding productivity thanks to the innovative Induction heating technologies that heat up the fusing belt quickly and efficiently and the improved belt cooling system. The imagePRESS doesn't sacrifice quality for productivity and these impressive speeds will increase the productivity of your print room and allow you to meet your customer's demand, increase customer loyalty and grow your business.

AUTO DUPLEX SUPPORT

Duplex printing is in high-demand amongst print professionals as this opens up revenue opportunities, especially for heavyweight stocks. With a compact and efficient path design, the imagePRESS C850/C750/C650 lets you quickly and effortlessly produce duplex print jobs on heavy weight media up to 300 gsm, with highly accurate front to back registration. Thanks to this technology, the imagePRESS C850/C750/C650 delivers a better performance and gives you the opportunity to handle more demanding jobs without manual intervention and impact on your print room productivity.

VERSATILE MEDIA HANDLING

WIDE RANGE OF APPLICATIONS

The most outstanding and eye-catching applications depend on the creativity and the material used for the job, which includes a mix of different substrate. The imagePRESS C850/C750/C650 has been designed to provide you with outstanding performance and impressive media handling. The Elastic Intermediate Transfer Belt – which increases toner transfer efficiency, including on textured or recycled paper – the imagePRESS C850/C750/C650 can handle heavyweight stocks and produce extensive applications ranging from leaflets to the highest-quality brochures and other marketing communications that will give you and your customer the return on investment desired.

LONG-SHEET PRINTING

Expand your application offerings with the capability to print and auto duplex on long sheets up to 762mm.

ADVANCED FEEDING TECHNOLOGY

The imagePRESS C850/C750/C650 features a new multi-drawer paper deck with enhanced air separation technology and optimum roller pressure, which handles a wide variety of media and prevents multi feeds even of coated stock. This new piece of technology can blow air at different speeds based on the type of paper and weight, virtually eliminating paper jams and significantly increasing your print room's efficiency and productivity.



The imagePRESS C850 series colour production digital presses:
More versatility, more automation, and better performance
- all in a lot less space.



INNOVATION END-TO-END

KEY FEATURES

FINISHING OPTIONS

- 1 STAPLE* AND SADDLE FINISHER**
Corner staple up to 100 sheets or saddle-stitch* up to 100-page booklets in paper sizes up to 330x483mm. An external side jogger keeps paper in neat stacks. An optional 2/3-hole puncher is also available.
- 2 BOOKLET TRIMMING**
High productivity with large-capacity trim waste bin and on-the-fly waste removal allow for continuous run. These modules work with the Saddle Finisher to produce professional, full-bleed booklets in-line.
- SQUARE-FOLD BOOKLET-MAKER***
Deliver professional-looking, lay-flat booklets with the speed and simplicity of in-line saddle-stitching. The SDD BLM300C Professional Booklet-Maker extends booklet-making capabilities up to 120 pages. The Plockmatic BLM50/35 allows print providers to produce up to 200-page (or 140 page) professional saddle-stitch booklets.

- 3 PAPER FOLDING UNIT**
Offer promotional pamphlets, brochures, and more with the ability to produce Z-fold, C-fold, accordion fold, and double-parallel fold documents.
- 4 HIGH-CAPACITY STACKER**
Realize maximum productivity with unload-while-run capability, helping to provide uninterrupted printing and virtually unlimited stacking. The integrated DFD interface lets configurations include various third-party finishing devices.
- 5 PROFESSIONAL DIE PUNCH AND CREASE UNIT**
The Multi Function Professional Puncher handles a broad range of media sizes and weights, and it includes a creasing function that helps reduce paper or toner cracking on the spine.

MAX RING BINDER*
Produce up to 50- or 100-sheet ring-bound booklets in-line to eliminate the handling and finishing steps between printing and binding.

- 6 PERFECT BINDER**
Using hot glue, this module binds covers to book blocks of up to 400 pages at 80gsm. Bond and can trim on all three sides for full-bleed books or manuals.
- 7 DOCUMENT INSERTION UNIT**
This module enables insertion of slip sheets or preprinted inserts and covers.

All paper capacity numbers are based on 80 gsm.

* Available only on Saddle Finisher.

† Not shown.



STAPLED DOCUMENTS

Produce stapled documents, such as presentation handouts, of up to 100 sheets, with both corner and double stapling capabilities.



SADDLE-STITCHED BOOKLETS

In-line saddle-stitching provides up to 100-page* or 120-page** brochures, catalogs, and programs. Square-fold options and unique Saddle Press technology* help to limit bowing, so booklets lie flat. In-line creasing† for high-quality half-folding and saddle-stitching significantly reduce paper or toner cracking on the spine.



FULL-BLEED BOOKLETS

Print booklets in sizes up to 330mm x 483mm and benefit from in-line, face- and two-knife trimming for high-quality,



PERFECT-BOUND BOOKS

Deliver soft-cover, glue-bound books of up to 400 pages in-line.



FOLDED BROCHURES

Produce flyers, mailings, letters, and folded leaflets in-line with the folding unit.

IM

8

9

10

11

Via the pre-located to produce with pro



IMAGING

- 8 CV TONER**
Canon's CV toner helps produce consistent, vivid, and sharp images on a wide range of media with a realistic, offset-like finish.
- 9 R-VCSEL LASER TECHNOLOGY**
R-VCSEL technology provides clear, crisp 2400 x 2400 dpi output at high speeds.
- 10 ADVANCED TWIN-BELT FUSING TECHNOLOGY**
This technology optimizes temperature control for outstanding productivity on media at weights as low as 52 gsm and as high as 300gsm.
- 11 E-DRUM**
The durable, reliable E-Drum is designed for excellent image transfer.

USABILITY

- 12 PRISMAsync USER INTERFACE****
The PRISMAsync interface expands possibilities with an intelligent server and media-driven workflow. It offers up to eight hours of advance production planning and scheduling, plus uniform workflow with other PRISMAsync-driven Canon digital presses, such as the vario-PRINT DP Line, VarioPrint 6000 Series, and imagePRESS C10000VP Series.
- 13 OPERATOR ATTENTION LIGHT****
You'll always know if your job is progressing smoothly, because this helpful light displays the status of the press at a glance and alerts staff in time for an operator to intervene and keep production running.
- CANON PRESS CONSOLES***A**
The Canon Press Console provides easy access to operator settings, such as the media library, press stability controls, and output appearance settings.

PAPER FEEDING OPTIONS

- 14 MULTI-DRAWER PAPER DECK**
Three paper drawers offer up to 6,000-sheet capacity and maximum size of 330mm x 483mm. All drawers accommodate all supported media weights and types except envelopes.
- POD DECK LITE^A**
This deck's 3,500-sheet capacity supports paper sizes up to 330mm x 483mm and envelopes in a range of sizes.
- POD DECK LITE XL^A**
This XL deck's sheet capacity supports paper sizes up to 487.7mm to 762mm.
- LONG-SHEET TRAY^A**
Along with the Stack Bypass Tray, it can feed long sheets up to 762mm.
- ADVANCED FEEDING TECHNOLOGIES**
The Multi-Drawer Paper Deck and POD Deck Lite come standard with Air Separation and Air Assist features that help provide excellent paper feeding, especially of coated stocks.

* For a list of validated stocks between 301 gsm to 350 gsm for cover, please consult the imagePRESS C850/C750/C650 Series Specialty Media Handling Guide.

** Available only with PRISMAsync Color Print Server.

*** Available only with the imagePRESS Server H300/G200 and imagePRESS Printer Kit.

^ANot shown.



OFF-LINE FINISHING

Via the High-Capacity Stacker, the imagePRESS C850 and C750 presses output neat stacks of loose leaves that can be unloaded to feed your off-line, post-processing equipment—and all without interrupting print production.



BOUND PRESENTATIONS AND MANUALS

In-line die punching creates ready-to-bind documents for a variety of binding methods, such as plastic comb, velo bind, or color coil binding, eliminating the need for prepunched sheets or off-line hole punching.[†]

The in-line Ring Binder creates up to 200-page punched and bound books in one uninterrupted run, also eliminating the off-line binding step.



ENVELOPES

Offer complete, end-to-end marketing solutions with the ability to print envelopes in a range of sizes, including #10, Monarch, 6" x 9", 9" x 12", and 10" x 13".

All paper capacity numbers are based on 80 gsm.

[†] Requires Booklet Finisher-W1.

** Requires SDD BLM300C Professional Booklet-Maker.

[†] Not available at initial launch. Contact your Authorized Canon Dealer for availability.

STREAMLINED WORKFLOW



PRISMAsync COLOUR PRINT SERVER

Flexible, cutting-edge controller that's impressively easy to use.

A SINGLE POINT OF CONTROL

Canon's PRISMAsync Color Print Server consolidates control of your entire production system into a single point. Whether preparing simple jobs such as scan-to-file or complex jobs such as page programming, you can easily perform a range of tasks from one user interface.

INTUITIVE OPERATION

Prepress and production tasks are intuitively clear with a highly visual user interface design. Templates, automated workflows, and hot folders allow for the loading of repetitive job settings.

CONFIGURABLE WORKFLOW SUPPORT

Whatever your workflow, the PRISMAsync Print Server can be set up to meet your precise needs with its configurable user interface. The embedded CIP4-compliant JDF/JMF workflow connector allows integration into JDF/JMF enabled workflows. And seamless integration with the PRISMA software suite offers access to easy-to-use, professional, make-ready and document management solutions.

TOTAL PRODUCTION CONTROL

Stay in control of your schedule with plan-ahead production. The Job Scheduler lets you monitor multiple jobs, receive custom notifications, and change priorities as needed. Smart, state-of-the-art features, such as Page Programming and DocBox, let operators store and manipulate jobs directly from the PRISMAsync controller interface.

PRISMAsync REMOTE MANAGER

Operators and administrators can manage queues, submit print jobs, and reroute jobs among multiple PRISMAsync-driven engines via the standard PRISMAsync Remote Manager software.

The unique, Web-based Multi-Press Scheduler provides remote monitoring from virtually any workstation or mobile device on your network.

POWERED BY
Adobe PDF Print Engine
with Mercury RIP architecture



PRISMAsync Print Server



imagePRESS SERVER H300/G200

Fiery® technology helps improve efficiency and performance.

WORK ACROSS PLATFORMS

The imagePRESS Servers integrate smoothly with your various prepress workflows, third-party software, and EFI™ solutions.

EFFICIENT JOB MANAGEMENT

An intuitive print management interface for Fiery servers, the Command WorkStation® centralizes and helps simplify job management. Operators can monitor and direct jobs, automate workflows, and preview and adjust documents.

SPOT-ON™ COLOR MATCHING

The powerful Spot-On utility helps remove the guesswork from color matching, offering an intuitive interface that makes it fast and easy to define or modify spot colors. It eliminates the time-consuming task of looking up CMYK values.

DIRECT PRINTING FROM APPLE® MOBILE DEVICES

Enhance press accessibility with the ability to print directly from compatible Apple® iPad®, iPhone®, and iPod touch® devices. Using an enterprise's wireless connection, users can print from the native print feature of a mobile device.

* Supported on Apple devices running iOS 4.2 or later.



imagePRESS PRINTER KIT

Embedded controller for entry-level production

Designed for operations that use a printer driver workflow and don't require job or queue management tools, the imagePRESS Printer Kit is a cost-efficient choice for a genuine Adobe® PostScript® controller.

SERVER SPECIFICATIONS



	FIERY PRINT CONTROLLER		PRISMAsync CONTROLLER	CANON imagePRESS PRINTER KIT
	imagePRESS Server G200	imagePRESS Server H300	PRISMAsync IPR C850 Series A-1	imagePRESS Printer Kit
Server Type	Embedded Fiery based server	Embedded Fiery based server	External PRISMAsync server	
Page Description languages	PCL5/6 (Driver & utility support : Only for embedded/PCL interpreter is available on external Fiery server) Adobe PostScript Level 4		Postscript L3, PDF 1.7, IPDS (transactional), PCL/PJL (transactional)	PCL 5/6 UFR II
Resolution	1,200 dpi x 1,200 dpi, 600 dpi x 600 dpi		PS/PDF: 600 x 600 dpi or 1,200 x 1,200 dpi, Transactional PCL: 600 x 600 dpi, Transactional IPDS: 600 x 600 dpi	1,200 dpi x 1,200 dpi, 600 dpi x 600 dpi
Memory	Embedded Fiery based server: 1 x 4 GB	Embedded Fiery based server: 2 x 2 GB	1 x 8GB DDR3	2 GB
Hard Disk drive	Embedded Fiery based server: 1 x 500 GB	Embedded Fiery based server: 2 x 1 TB	2 x 3.5" SATA II, 500GB, 7200rpm	2 GB
Processor Speed	Embedded Fiery based server: 3.3 GHz (Intel Pentium G850)	Embedded Fiery based server: Up to 3.6 GHz (Intel Core i5 2400)	2.9 GHz (Intel Quad Core i5-4570S)	1 TB
Fonts	138 Adobe PS fonts, 113 PCL fonts, 32 barcode		136 Type1 fonts for roman languages User import of PS fonts via Settings Editor Optional Adobe Asian fonts: Japanese: 5 Morisawa fonts (no Heisei fonts) Chinese: 2 fonts for simplified Chinese, 1 font for traditional Chinese Korean: 1 font for Korean	136 Adobe PS fonts, 113 PCL fonts, 32 barcode
Supported Operating Systems	Windows: 7,8/8.1,10,Server 2008/2008R2, Server 2012/2012R2/2016 MacOS: 10.9,10.10,10.11,10.12		Windows 7 (32/64 bit), Server 2012R2, 8.1 (32/64bit) and 10 MacOS 10.9 (64 bit), MacOS 10.10 (64 bit), MacOS 10.11 (64 bit), Server 2016, MacOS 10.12/13 (64 bit)	Windows: 7,8/8.1,10,Server 2008/2008R2, Server 2012/2012R2/2016 MacOS: 10.9
Network Interface	Ethernet 1000 Base-T/100Base-TX/10Base-T, USB, DVI connector (only for H300), Display Port connector (only for H300)		Ethernet (10/100/1000 Base-T), USB for files via operator panel, DVI for connection of operator panel	Ethernet 1000 Base-T/100 Base-TX/10Base-T, USB
Network Protocols	TCP/IP, AppleTalk (only support font downloader), Bonjour, SNMP, IPP, FTP, SMB, IPv6,WSD (minimum support to achieve WHQL certification)		TCP/IP, SNMP v1/v3, Host resources MIB, System group MIB II, Printer MIB, Job Monitor MIB, Job Management MIB submission via lpr, Hotfolders, socket, SMB, IPP, JDF/JMF (via adapter), USB stick	TCP/IP, AppleTalk (only support font downloader), Bonjour, SNMP, IPP, FTP, SMB, IPv6,WSD
EFI Accessories (Optional)	Productivity Package	Impose and Compose GA Package Premium Edition, Removable HDD Kit	-	-



PRODUCTS SPECIFICATIONS

MAIN UNIT - GENERAL SPECIFICATIONS

Printing Technology	Colour Laser Beam Printing
Print Resolution	Up to 2400dpi x 2400dpi, 256 gradations
Registration Tolerance	Front to Back: 1.0mm or less
Print Speed	imagePRESS C850: up to 85 ppm imagePRESS C750: up to 75 ppm imagePRESS C650: up to 68 ppm
Paper Capacity	Standard 3 x 550-sheet cassettes (80gsm) Option 100-sheet multi-purpose tray (80 gsm) POD Deck Lite-C1 1 x 3500 sheets side paper deck (A4/A3/SRA3) POD Deck Lite XL-A1 1x 3500 sheet side paper deck (A4/A3/SRA3), 1x 1000 sheets of length > 487.7 mm Multi-drawer Paper Deck C1 1 x 6,000 sheets (3 x 2,000 sheets - A4/A3/SRA3) Max Paper Input Capacity 7,650 sheets (A4/A3) Max Paper Output Capacity 11,200 sheets (A4 80 gsm)
Supported Media Types	Cassettes Thin paper, Plain paper, Recycled paper, Colour paper, Heavy paper, Pre-punched paper, Bond, Letterhead, Tab paper* Transparency, Envelopes** Multi-purpose tray Thin paper, Plain paper, Recycled paper, Colour paper, Heavy paper, Coated paper, Pre-punched paper, Tab paper, Bond, Transparency, Label, Envelopes, Letterhead Optional Paper Deck Thin paper, Plain paper, Recycled paper, Colour paper, Heavy paper, Pre-punched paper, Coated paper, Textured, Bond, Transparency, Label, Letterhead, Tab paper***, Envelopes, Long Sheet Media
Supported Media Sizes	Paper cassette 1, 2 & 3 Standard size A4, A4R, A5R, A3, SRA3, 13"x19" (330 x 483 mm) Free size 100 mm x 148 mm to 330.2 mm x 487.7 mm Multi-purpose tray & POD Deck Lite XL-A1 Standard size A4, A4R, A5R, A3, SRA3, 13"x19" (330 x 483 mm) Free size 100 x 148 mm to 330.2 x 487.7 mm Long sheet Up to 330.2 x 762 mm
Supported media weights	Cassettes 52 to 220 gsm Multi-purpose tray/Optional Paper deck 52 to 300 gsm Duplex 52 to 300 gsm
Warm Up Time	Approximately 360 seconds
Interface Type	USB 2.0 Hi-speed
Network Protocols	Ethernet 1000 BaseT/100Base-TX/10Base-T Standard 2 x USB Host (1 on left side of PRISMAsync operation panel) TCP/IP (LPD/Port 9100/WSD/IPP/IPPS/SMB/FTP), IPX/SPX (NDS, Bindery), AppleTalk
Processor Speed	1.66 GHz (SOC ARM 1136JF-S 400 MHz ARM 946 200 MHz)
Memory	1.5GB (SOC 2GB)
Hard Disk Drive Standard	1TB Hard Disk Drive
Control Panel	Efi/Canon PS/PCL Upright Control Panel G1: 26.4 cm (10.4 inch) TFT SVGA LED Backlight Colour Uplight Touchscreen Operating Panel-A4: 15 inch touch panel screen
Dimension	PRISMAsync (W x D x H) 1,952 mm [#] x 934 mm x 1,424 mm [#]
Min Installation Space	1,952mm (W) x 1,624mm (D)
Weight	Approx 316kg [#] includes ADF
Operating Environment	Temperature- 20 to 27°C (50 to 86°F) Humidity- 15 to 60 % RH (no condensation)
Power Source	220-240 V (±10%), 50/60 Hz (±2 Hz), 13AMP x 2
Power Supply Consumption	Max Approx 1,560W (at power supply) or less + 2,500W (at fusing unit) or less Plug In-Off Mode Approx. 1.0Wh or less Sleep Mode Approx. 1.5Wh or less
Typical Electricity Consumption Rating (TEC)	10.7kwh in imagePRESS C850 85ppm; 9.9kwh in imagePRESS C750 75ppm 8.9kwh in imagePRESS C650 65ppm
Noise Levels Sound Pressure	Active: 75dB or less Standby:56dB or less

* Requires Tab feeding attachment
** Requires Envelope feeding attachment
*** Requires Multi Drawer Paper Deck C1

[#] IPv4/IPv6 support
[#] Includes Operator Panel and Output tray option
[#] Includes Operator Panel Height to ADF is 1,222.2mm

SCAN SPECIFICATION - DUPLEX COLOUR READER UNIT K1

Description	Optional/Standard	Automatic colour flatbed scan unit and 300-sheet duplex automatic document feeder (One-Pass Duplex Scan)
Type		Colour flatbed plus one-pass duplex automatic document feeder
Supported media sizes		A3, A4, A4R, A5, A5R, Free sizes (W x L): Min. 139.7 mm x 128 mm, Max. 432 mm x 304.8 mm
Supported media weights	Single Double	38 to 220 gsm/64 to 220 gsm; 50 to 220 gsm/64 to 220 gsm
Scan Resolution		Copy:600 dpi x 600 dpi Send: 600 dpi x 600 dpi/300 dpi x 300 dpi
Duplex scanning		2-sided to 2-sided (Automatic)
Scan speed		Single-sided (A4, 300 dpi): (BW/CL) 120/120 ipm* Double-sided (A4, 300 dpi): (BW/CL) 200/140 ipm* Single-sided (A4, 600 dpi): (BW/CL) 120/70 ipm* Double-sided (A4, 600 dpi): (BW/CL) 120/70 ipm*

*When PRISMAsync RIP is connected as following.
Single-sided & Double-sided (A4, 600 dpi): (BW/CL) 70/70 ipm

SEND SPECIFICATION - DUPLEX COLOUR IMAGE READER UNIT H1

Description	Optional/Standard	Standard on all models
Send Resolution		100 dpi, 150 dpi, 200 x 100 dpi, 200 dpi, 300 dpi, 200 x 400 dpi, 400 x 200 dpi, 400 dpi, 600 dpi
Destination		E-Mail/Internet FAX (SMTP), PC (SMB, FTP), WebDAV, Google Docs with iR-ADV Cloud Connect MEAP application
Address Book/Speed Dials		LDAP (1000) / Local (Max. 500)
File formats		TIFF, JPEG, PDF, XPS, High compression PDF/XPS, A-1b, Searchable PDF/XPS, Office Open XML (PowerPoint, Word)
PDF/		
Universal Send Feature Sets		Universal Send Advanced Feature Set D1 (option): Create outline PDF (Trace and Smooth), Adobe Reader Extensions PDF (Searchable PDF/XPS is a standard feature.) Universal Send Security Feature Set D1 (option): Send encrypted PDF, and add digital device signature to PDF/XPS files. Universal Send Digital User Signature Kit C1 (option): Add digital user signature to PDF/XPS files.

COPY SPECIFICATION

Copy Speed (BW/CL)	85 ppm model 75 ppm model 65 ppm model	Up to 85/85 ppm (A4/A5R), up to 62ppm (A4R) Up to 75/75 ppm (A4/A5R), up to 62ppm (A4R) Up to 68/68 ppm (A4/A5R), up to 62ppm (A4R)
First Copy Output Time (FCOT)	(BW/CL)	Color: Approx. 7.7 sec BW : Approx. 6.9 sec
Copy resolution		Reading: 600 dpi x 600 dpi Printing: 2400 dpi x 2400 dpi
Multiple Copy		Up to 9,999 copies
Reduction/Enlargement	Zoom Fixed Zoom Ratio	25-400% in 1% increments 25%, 50%, 70%, 100%, 141%, 200%, 400%

eMAINTENANCE

Take control of your Canon device fleet and reduce administration burdens with eMaintenance. With less downtime and easy maintenance, you will have longer uptime and greater productivity.

INPUT SPECIFICATIONS

POD DECK LITE-C1	
Paper Size	A3, A4, A4R, A5R, SRA3, 13"x19", Free size (139.7 mm x 148 mm to 330.2 mm x 487.7 mm) 52 to 300gsm
Paper Weight	52 to 300gsm
Paper Capacity	3,500 sheets (80gsm) / 4,000 sheets (64gsm)
Dimensions (W x D x H)	717 mm x 686 mm x 568 mm
Weight	Approx. 76 kg

POD DECK LITE XL - A1	
Paper Size	A3, A4, A4R, A5R, SRA3, 13"x19", Free size (139.7 mm x 148 mm to 330.2 mm x 487.7 mm, 210 mm x 487.8 to 762 mm)
Paper Weight	52 to 300gsm up to 487.7 length and 64 to 300gsm from 487.7 to 762mm
Paper Capacity	3,500 sheets (80gsm) 4,000 sheets (64gsm) 1,000 sheets (80gsm) for > 487.7mm
Dimensions (W x D x H)	1105mm x 686mm x 574 mm
Weight	Approx. 113 kg

MULTI-DRAWER PAPER DECK-C1	
Paper Size	A3, A4, A4R, A5R, SRA3, 13"x19", Free size (139.7 mm x 182 mm to 330.2 mm x 487.7 mm)
Paper Weight	52 to 300gsm
Paper Capacity	3 x 2000 sheets, total 6000 sheets (80gsm) 3 x 2200 sheets, total 6600 sheets (64gsm)
Dimensions (W x D x H)	950 mm x 797 mm x 1098 mm
Weight	Approx. 155 kg

OUTOUT SPECIFICATIONS

COPY TRAY-R2 [SUPPORTS C650/C750/C850]	
Paper Size	All available size on marking engine
Paper Weight	52 to 300gsm
Output Capacity	250 sheets at simplex printing/ 100 sheets at duplex printing
Dimensions (W x D x H)	422 mm x 382 mm x 175 mm
Weight	Approx. 1.2 kg

STAPLE FINISHER-T1 [SUPPORTS C650/C750]	
Tray Capacity	Upper Tray (A) A4/A4R/A5R 1,300 sheets, A3/SRA3/13"x19" 650 sheets Lower Tray (B) A4 2,450 sheets, A4R 1,700 sheets, A3/SRA3 650 sheets
Paper Weight	52 to 300gsm
Staple Position	Corner, Double
Staple Capacity	A4: 50 sheets, A3/A4R: 30 sheets
Dimensions (W x D x H)	644 mm x 656 mm x 1,121 mm
Weight	Approx. 48 kg

BOOKLET FINISHER-T1 [SUPPORTS C650/C750]	
Tray Capacity	Upper Tray (A) A4/A4R/A5R 1,300 sheets, A3/SRA3/13"x19" 650 sheets Lower Tray (B) A4 2,450 sheets, A4R 1,700 sheets, A3/SRA3 650 sheets
Paper Weight	52 to 300gsm
Staple Position	Corner, Double
Staple Capacity	A4: 50 sheets, A3/A4R: 30 sheets
Booklet stitch paper size	A3, A4R
Booklet stitch staple capacity	16 sheets (80gsm)
Dimensions (W x D x H)	644 mm x 656 mm x 1,121 mm
Weight	Approx. 72 kg

STAPLE FINISHER-W1 PRO [SUPPORTS C650/C750/850]	
Tray Capacity	Upper Tray (A) A4/A4R/A5R 1,000 sheets, A3/SRA3/13"x19" 1,000 sheets Lower Tray (B) A4 4,000 sheets, A4R 2,000 sheets, A3 1,500 sheets, SRA3 1,000 sheets
Paper Weight	52 to 300gsm
Staple Position	Corner, Double
Staple Capacity	A4: 100 sheets, A3/A4R: 50 sheets
Dimensions (W x D x H)	800 mm x 792 mm x 1,239 mm
Weight	Approx. 130 kg

BOOKLET FINISHER-W1 PRO [SUPPORTS C650/C750/850]	
Tray Capacity	Upper Tray (A) A4/A4R/A5R 1,000 sheets, A3/SRA3/13"x19" 1,000 sheets Lower Tray (B) A4 4,000 sheets, A4R 2,000 sheets, A3 1,500 sheets, SRA3 1,000 sheets
Paper Weight	52 to 300gsm
Staple Position	Corner, Double
Staple Capacity	A4: 100 sheets, A3/A4R: 50 sheets
Booklet stitch paper size	A3, A4R, SRA3, 13"x19", Free size 210x279.4 mm to 330.2x487.7 mm
Booklet stitch staple capacity	25 sheets (80gsm)
Dimensions (W x D x H)	800 mm x 792 mm x 1,239 mm
Weight	Approx. 180 kg

BOOKLET TRIMMER F1 <i>Requires Booklet Finisher</i>	
Trim Width	2-20mm
Trim Thickness	Up to 50 sheets (includes Cover)
Acceptable Paper Weight	52 to 300gsm
Dimensions (W x D x H)	2,091mm (including joint, conveyor and output tray) x 790mm x 1,040mm
Weight	Approx 152 kg

TWO-KNIFE BOOLET TRIMMER A1 <i>Requires Booklet Trimmer</i>	
Trim Width	2-15 mm
Trim Thickness	Up to 50 sheets (includes Cover)
Acceptable Paper Weight	52 to 300gsm
Dimensions (W x D x H)	536 mm x 770 mm x 1,040 mm
Weight	Approx 145 kg

PUNCH UNIT BT1/BU1 <i>Requires Booklet Finisher W1 Pro or Finisher W1 Pro</i>	
Punch Hole type	BT1 2 holes and 4 holes (FRN) selectable, BU1 4 holes (Swedish)
Acceptable Punch Paper Weight	52-300 gsm
Acceptable Punch Paper Size	2 holes A3, A4, A4R, Free size (182 x 182 to 297 x 432.0 mm) 4 holes A3, A4, Custom size, Free size (257 x 182 to 297 x 432 mm)
Weight	Approx 7.7 kg

DOCUMENT INSERTION UNIT N1	
Number of trays	2 trays
Paper size	A3, A4, A4R, SRA3, 13"x19", Free size (182 x 182 mm to 330.2 x 487.7 mm)
Paper Weight	52 to 300 gsm
Paper Capacity	200 sheets x 2 trays (80 g/m ²)
Dimensions (W x D x H)	336 mm (746mm including Tray) x 793 mm x 1407 mm
Weight	61 kg

HIGH CAPACITY STACKER H1	
Paper Size	A3, A4, A4R, A5R, SRA3, 13"x19", Free size (140 x 182 mm to 330.2 x 487.7 mm)
Paper Weight	52 to 300 gsm
Output Capacity	Stack tray 6,000 sheets (80 gsm) in two stacks of 3,000 sheets each Top Tray 200 sheets
Dimensions (W x D x H)	899 mm x 745 mm x 1,040 mm
Weight	Approx. 120 kg

PAPER FOLDING UNIT J1		
Z-Fold	Paper size A3, A4R	Paper weight 52 to 105 gsm
C-Fold	A4R	52 to 105 gsm
Accordion Z-fold	A4R	52 to 105 gsm
Double parallel	A4R	52 to 90 gsm
Half fold	A4R	52 to 105 gsm
Output Capacity	C-Fold and Accordion Z-fold: 40 sheets, Double parallel: 25 sheets	
Dimensions (W x D x H)	336 mm x 793 mm x 1190 mm	
Weight	Approx. 71 kg	

PERFECT BINDER-E1	
Booklet size	Width 203 to 297 mm, Length 138 to 216 mm
Booklet thickness	Up to 25 mm
Cutting Range	Top/bottom 6.5 to 39.5 mm at each edge, foredge: 6.5 to 49.5 mm
Body pages	Number of sheets 10 to 200 sheets (75 gsm), plus Cover Sizes Width: 257 to 320 mm, Length: 182 to 228.6 mm Paper weight 60 to 163 gsm* (*106 to 163 gsm: up to 10 sheets as inserted paper)
Cover	Number of sheets 1 sheet Sizes Width: 257 to 330.2 mm, Length: 364.0 to 487.7 mm Paper weight 91 to 300 gsm
Tray capacity	Approx. 127 mm or total approx. 1,000 sheets of paper as a total
Dimensions	922 x 791 x 1,300 mm
Weight	306 kg
Power	240V, 2.6A

MULTI-FUNCTIONAL PRO PUNCHER-A1	
Acceptable Paper Weight	75-300gsm (Plain paper), 120-300gsm (Coated paper)
Acceptable Paper Size	Punch A5, A4, A4R, SRA4, A3, SRA3 Crease A4R, SRA4, SRA3 Punch Tools Plastic Comb 21-Hole, Twin Loop 23-Hole (Round), Twin Loop 34-Hole (Round), Color Coil 47-Hole, Velo Bind 12-Hole, Loose Leaf 4-Hole Punch, Loose Leaf 2-Hole Punch, Loose Leaf 4-Hole (Swedish), Loose Leaf 3-Hole
Dimensions (W x D x H)	445 mm x 792 mm x 1040 mm
Weight:	Approx. 102kg

For information on full accessories and other server specifications, kindly refer to the product information at www.canon-asia.com.



SOUTH & SOUTHEAST ASIA REGIONAL HEADQUARTERS

CANON SINGAPORE PTE. LTD.

1 Fusionopolis Place Galaxis #15-10 Singapore 138522

Tel: +65-6799 8888 | Fax: +65-6799 8882 | www.canon-asia.com | www.canon.com.sg

CANON SALES SUBSIDIARIES & BUSINESS PARTNERS

HONG KONG

Canon Hongkong Co. Ltd
5/F, Tower A, China Life Center,
18 Hung Luen Road,
Hung Hom, Kowloon,
Hong Kong
Tel : 852 3191 2388
Fax : 852 2369 3800
www.canon.com.hk

PHILIPPINES

Canon Marketing (Philippines), Inc.
7/F Commerce and Industry Plaza,
1030 Campus Avenue Corner
Park Avenue, McKinley Hill,
Fort Bonifacio Taguig City,
Metro Manila Philippines 1634
Tel : 632-884 9000/884 9090
Fax : 632-884 9035
www.canon.com.ph

THAILAND

Canon Marketing (Thailand) Co. Ltd
98 Sathorn Square Office Tower,
22nd - 24th Floor,
North Sathorn Road,
Silom, Bangrak,
Bangkok 10500
Tel : 66-2-344 9999
Fax : 66-2-344 9939
www.canon.co.th

MALAYSIA

Canon Marketing (Malaysia) Sdn Bhd
No.6-2-01, Tower 6, UOA Business Park,
Jalan Pengaturcara U1/51A, Seksyen U1
40150 Shah Alam, Selangor
Darul Ehsan, Malaysia
Tel : 1800-88-2000
Fax : 60-3-5567 9441
www.canon.com.my

INDONESIA

PT Samafitro
Jalan Ir. H Juanda No. 8
Jakarta 10120,
Indonesia
Tel : 61-21-2949 5500
Fax : 62-21-384 4271
www.samafitro.co.id

VIETNAM

Canon Marketing (Vietnam) Co. Ltd
Level 10, President Place,
93 Nguyen Du, Dist 1,
Ho Chi Minh City, Vietnam
Tel : 84-8-3820 0466
Fax : 84-8-3820 0477
www.canon.com.vn

INDIA

Canon India Private Limited
7th Floor, Tower B,
Building # 5,
DLF Epitome, DLF Phase III,
Gurgaon 122002
Tel : 91-124-4160000
Fax : 91-124-4160011
www.canon.com.in

TAIWAN

Canon Marketing (Taiwan) Co. Ltd
19F, No. 100, Sec. 2 Roosevelt Road,
Taipei, Taiwan, R.O.C.
Tel : +886-2-6632-8888
Fax : +886-2-7725-5860
www.canon.com.tw